

User Manual

For Windows and Macintosh OS



G10T *Wireless*
Graphics Tablet

Precautions

1. Please read this manual carefully before using, and keep it well for future reference.
2. Before cleaning the tablet please unplug the power cord and wipe with a soft damp cloth, do not use any kind of detergents.
3. Don't expose this product to water or other liquids. Take care to never spill liquids onto the tablet and pen. Exposing this product to water or other liquids may cause product malfunction or electrical shock.
4. Do not place the tablet on where is unstable or a height for children reaching easily in order to avoid danger. Prevent children from swallowing the pen nib or side switch. The pen nib, side switch, or other movable parts may accidentally be pulled out if children are biting on them.
5. Power off your tablet in locations where/when electronic devices is not allowed. Because the tablet may cause other electronic devices to malfunction in some locations where/when the use of electronic devices is not allowed, such as within an airplane, be sure to turn off the tablet.
6. To protect your tablet and save power, please switch off the power when it is not in use.
7. Do not disassemble the tablet and pen. Do not disassemble or otherwise modify the tablet or pen. Such action may cause heat generation, ignition, electronic shock, or other damage, including human injury. Disassembling the product will void your warranty.
8. While getting the components replaced, you are supposed to guarantee that the repairman is using the substitute components specified by the manufacturer. Unauthorized component replacement might cause fire, electric shocks or other dangers.
9. Do not insert foreign material into the USB port or any other opening of this product. If a metal object or foreign material is inserted into a port or other opening of this product it may cause the product to malfunction or burn out, or cause electronic shock.
10. Tablet and Digital pen has a lithium battery, which should be charged in time under low battery mode, and at the same time it should be charged every 3 months, otherwise it will cause lithium battery damage.
11. The nib of the digital pen can't be pressed when it is placing, otherwise the pen can't enter the power-saving state, which is easy to cause lithium battery over-discharge damage.

Contents

1. Product Overview.....	3
1.1 Tablet Introduction.....	3
1.2 Product and Accessories	3
1.3 Tablet Connection	5
1.4 Driver Installation.....	6
1.5 Pen Nib Replacement.....	7
1.6 Charging the Pen.....	7
2. Product Basic Operation	8
2.1 Using The Pen.....	8
2.2 Using the Tablet	10
3. Function Setting	12
3.1 Device Connection Prompt.....	12
3.2 Working Area Setting	12
3.3 Press Keys Function Setting	14
3.4 Pen Buttons Function Setting	14
3.5 Pressure Sensitivity Setting.....	15
3.6 Pen Pressure Testing	15
3.7 Enable the Windows Ink feature	16
3.8 Data Export and Import	16
4. Specifications	17
5. Trouble Shooting	18
5.1 Possible Breakdowns Related to TABLET	18
5.2 Possible Breakdowns Related to SYSTEM	18
6. CE and FCC Notice	19
7. After-service Contact	20

1. Product Overview

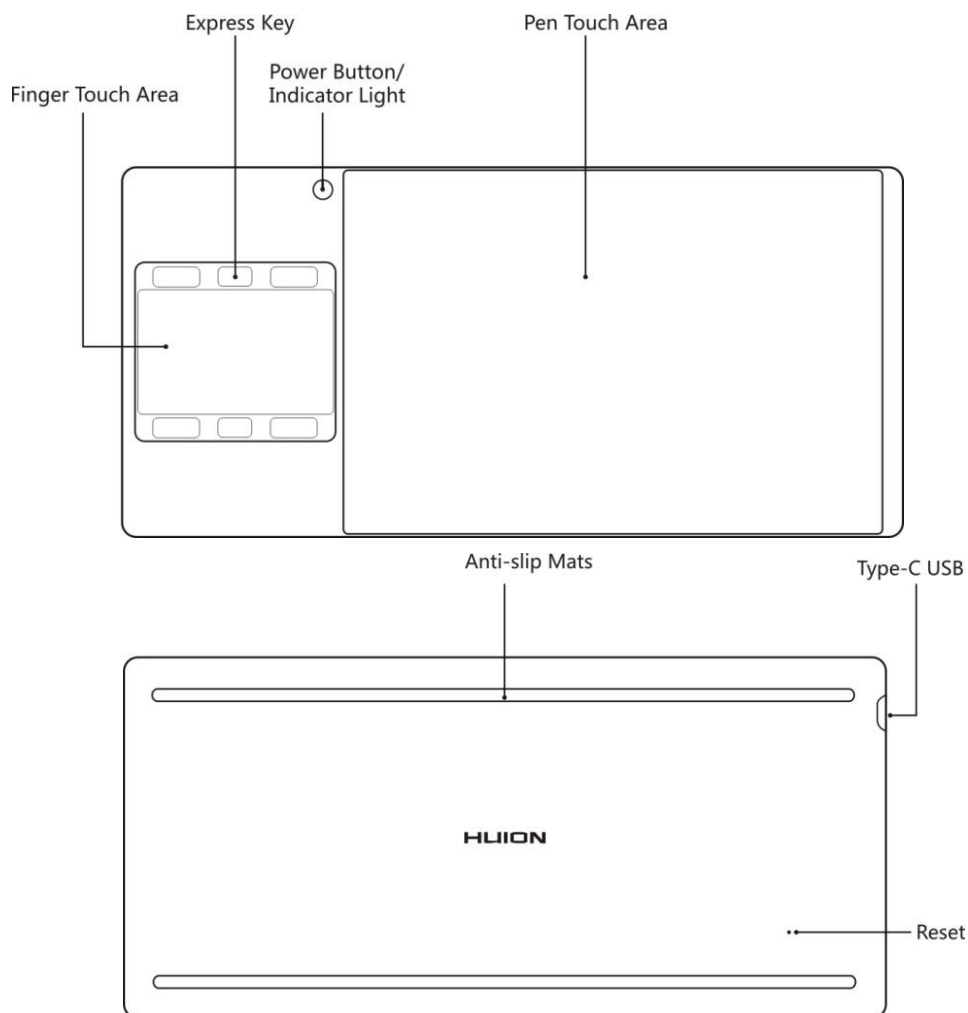
1.1 Tablet Introduction

Thanks for choosing HUION®INSPIROY® G10T wireless graphics tablet. This is a new generation of portable professional drawing tablet, which can greatly improve your work efficiency of painting and creation, and full of fun. You can freely painting and writing, depicting different lines and colors, just as the pen writes on the paper, which brings you a real shock experience.

To give you a better understanding and using of your tablet, please read this user manual carefully. The user manual only shows the information under Windows, unless otherwise specified, this information applies to both Windows and Macintosh systems.

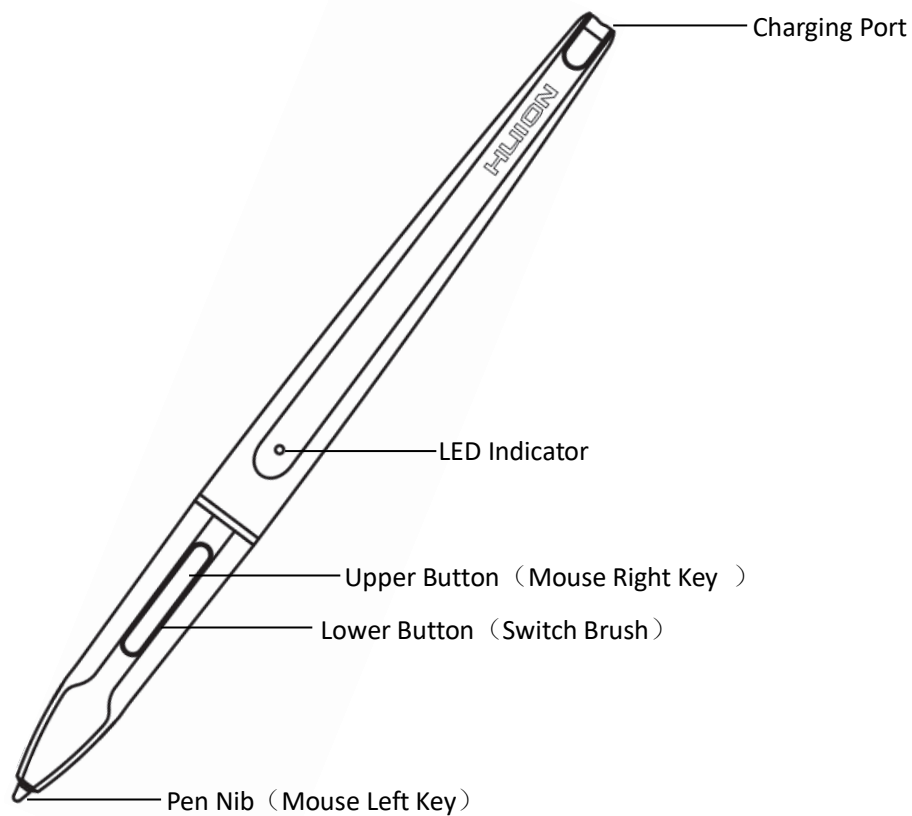
1.2 Product and Accessories

1.2.1 Graphics Tablet

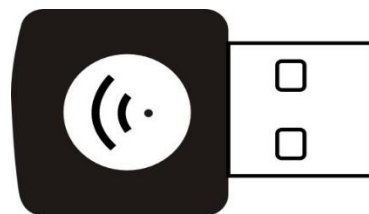


1.2.2 Stylus Pen

The stylus pen is a rechargeable pen with 8192 levels pressure sensitivity and can be used for around 350hrs with full battery.

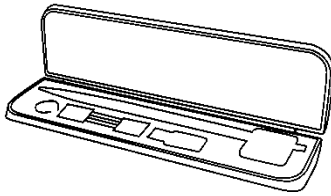


1.2.3 Wireless Receiver



When using wireless mode, please insert the receiver into your computer and unplug the USB cable in the same time.

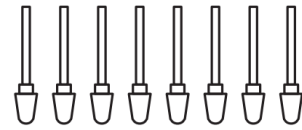
1.2.4 Other Accessories



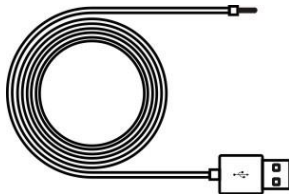
Pen Box



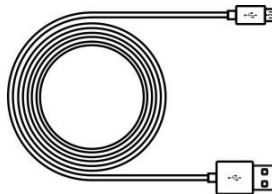
Pen Nib Clip



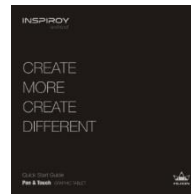
Replacement Nibs



Pen Charging Cable



USB-C Cable



Quick Start Guide

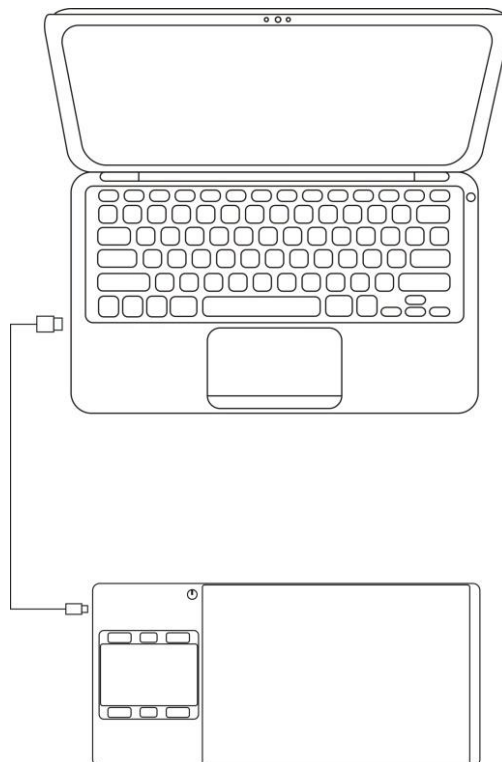


Installation CD

1.3 Tablet Connection

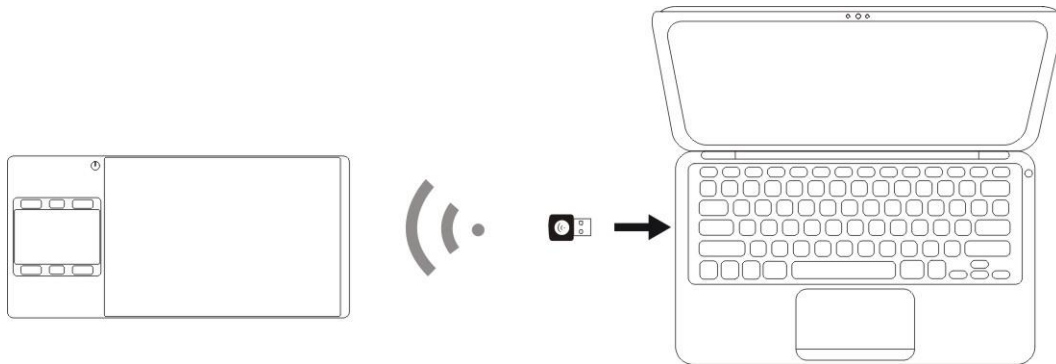
1.3.1 Wired Mode Connection

1. Connect the tablet to your computer with USB cable.



1.3.2 Wireless Mode Connection

1. Insert the wireless receiver to your computer.
2. Press the power button to power on the tablet.
3. When not using for 15mins, the tablet will enter sleep mode. In this case you need to press the power button again to wake the tablet up.



1.4 Driver Installation

1.4.1 OS Support



Windows 7 or later , macOS 10.11 or later

1.4.2 Install via CD

Open the CD folder, click driver program and finish the installation following the instruction.

1.4.3 Install via Download

If you don't have a CD/DVD drive, you can download the driver from our website:
www.huion.com

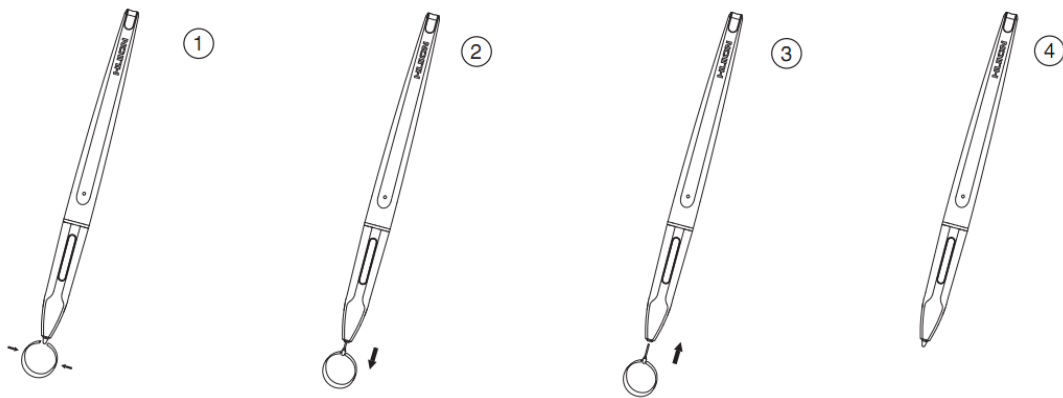
After finishing installation, you can find the driver icon  in the system tray area, which means the driver was installed successfully; When you connect the tablet to computer, the icon will change to color , which means the driver has already recognized the tablet and you can start using it now.

Notice :

1. Before installing, you need to uninstall other driver of similar products, including the old driver of this product.
2. Before installing, please close all graphics software and anti-virus software to avoid unnecessary mistake.

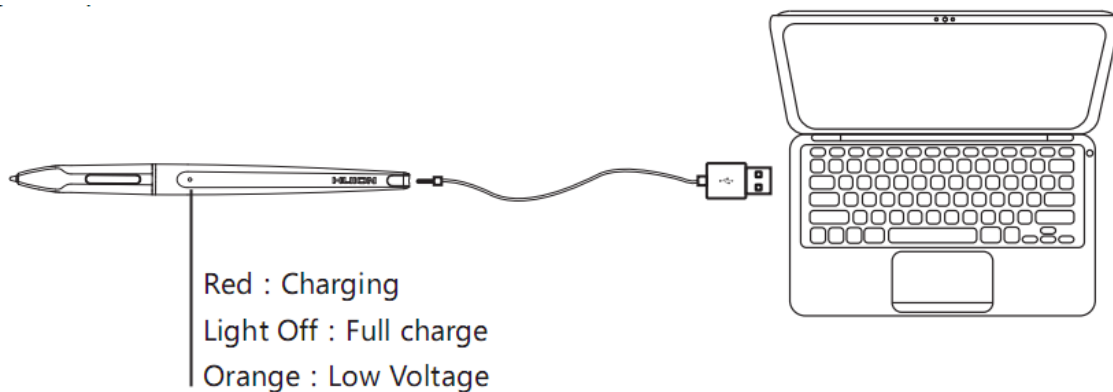
1.5 Pen Nib Replacement

1. The nib will wear off after using for a long time, thus may affect your normal use, then you need to replace a new nib in time.
2. Take out the new nib and clip from pen box.
3. Pull out the old nib with the nib clip.
4. Insert the new nib straight into the pen and push the nib slowly and firmly until it stops.



1.6 Charging the Pen

1. When the indicator on the pen shows orange, it means the voltage of the pen is low, and then you need to charge the pen.
2. Charge the pen with the attached charging cable. Insert one end of the pen charging cable into the rear of the stylus charging port, the other end can be connected to a computer, power supply or power bank.



2. Product Basic Operation

2.1 Using The Pen

2.1.1 Hold the pen

Hold the pen as you hold a normal pen or pencil. Adjust your grip so that you can toggle the side switch easily with your thumb or forefinger. Be careful not to accidentally press the switch while drawing or positioning with the pen.

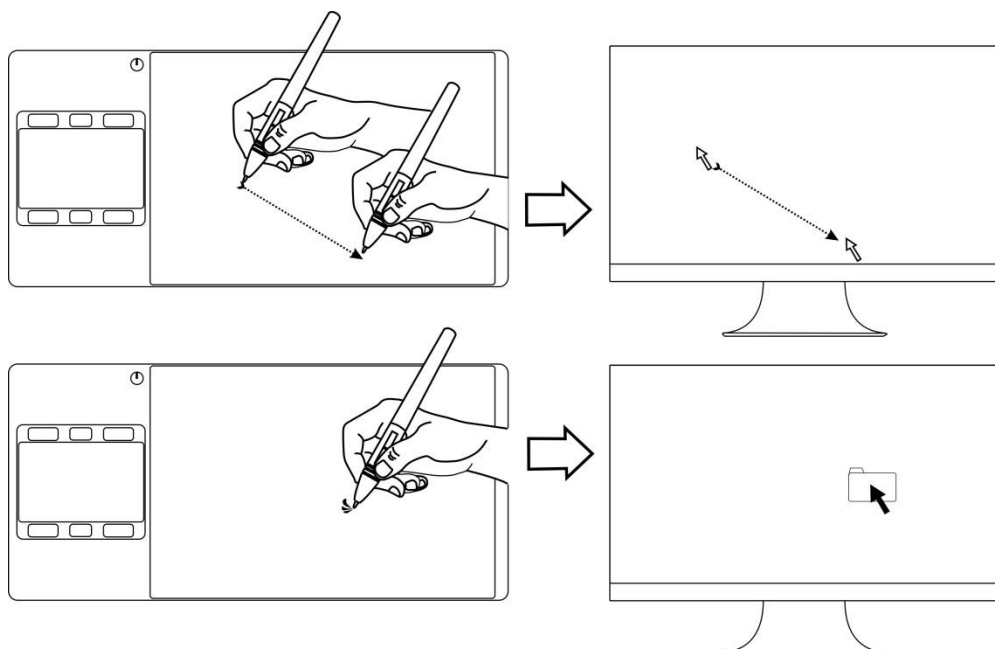


Notice : When not in use, place the pen in the pen case or on the desk. Do not place the pen on the surface of screen, which may interfere with the use of other screen cursor positioning equipment, may also cause your computer can not enter the sleep mode.

2.1.2 Position the cursor

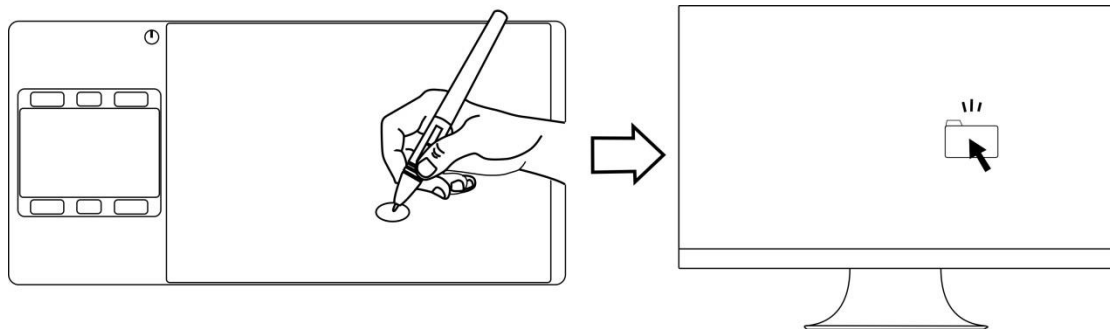
Move the pen slightly above the active area without touching the screen surface, the cursor will move to the new position accordingly.

Press the pen tip on the screen to make a selection. Tap the screen once with the pen tip, or touch it to the screen with enough pressure to register a click.



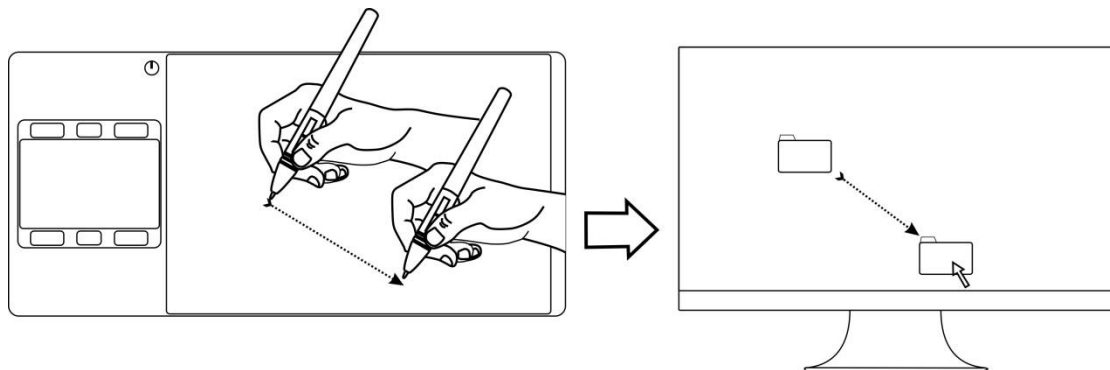
2.1.3 Click

Use the pen tip to tap once on the screen to register a click. Tap to highlight or select an item on the screen and double-click to open it.



2.1.4 Move

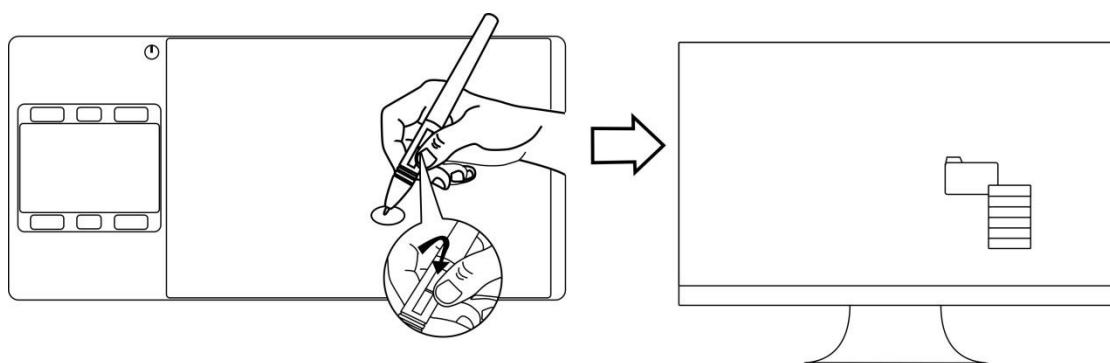
Select the object, then slide the pen tip across the screen to move it.



2.1.5 Use the side buttons

The buttons on the pen can be set to two different customizable functions. You can use the buttons whenever the pen tip is within 10mm of the tablet active area.

You do not have to touch the pen tip to the tablet in order to use the switch.



2.2 Using the Tablet

2.2.1 Power Switch

1. The power switch was placed on the top left side of the tablet, when you use the tablet on wireless mode, you need to turn on the power switch before using.
2. When not use the tablet for 15 minutes or press the power button for 3 seconds, it will enter sleep mode.

3. LED indicator:

When working: **White**-Detected pen or touch signal, **Off**-no pen or touch signal,
Red flashes-Voltage is low, need to be charged.

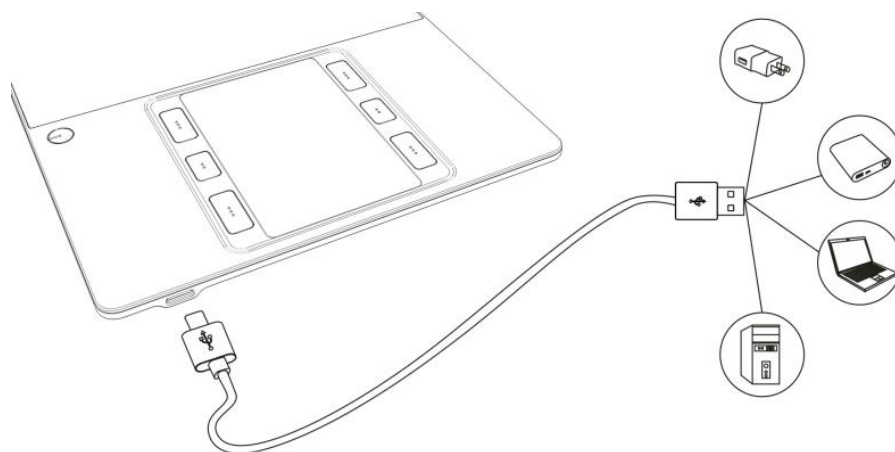
When charging: **Red**-Charging, **Off**-Full Charge.

2.2.2 Press Keys

There are 6 press keys on the top left side of the tablet, which you can set the function on the driver interface according to your own habits, which will help to improve your work efficiency.



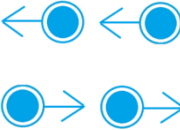
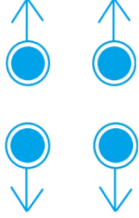

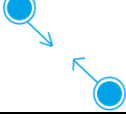
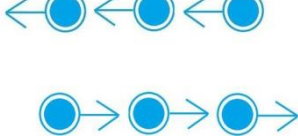

2.2.3 Charging the Tablet

1. Before using the tablet for the first time in wireless mode, you should fully charge the tablet battery. Do this by connecting the USB cable between tablet and a primary USB port on your computer, or to a powered USB port.
2. The USB cable is used for charging the battery, and also for operating the tablet as a wired USB tablet. The battery will charge whenever the USB cable is connected and the battery is not fully charged.
3. It will take about 7 hours to fully charge an empty battery. The actual charge time depends on current battery level and tablet use while charging. The battery status indicator shows RED when charging, and will be OFF when fully charged.
4. Whenever the tablet is connected to computer with USB cable, the wireless mode will be disabled.



2.2.4 Touch Pad

The top left side of the tablet is provided with a touch pad, you can achieve some basic operation with simple gestures, the default functions of the gestures are as follows:

Figure	Movement	Function	Gesture
Single finger	Tap the touchpad with one finger	Simulate the left mouse function	
Two fingers	Tap the touchpad with two fingers	Simulate the right mouse function	
	Swipe left/right with two fingers	Toggles the previous / next item	
	Scroll up/down with two fingers	Scroll	
	Move two fingers apart	Zoom in	
	Pinch two fingers together	Zoom out	
Three Fingers	Swipe left/right with three fingers	Switch tasks	
Four Fingers	Tap the touchpad with four fingers	Display Desktop	

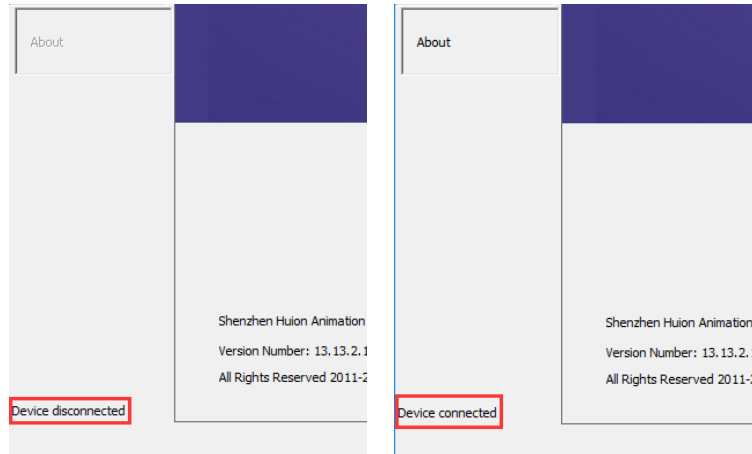
Notice:

1. The above gestures only support some software.
2. Some of the gestures may not working on different OS version.
3. Touch function can be disabled in the driver.

3. Function Setting

3.1 Device Connection Prompt

1. Device disconnected: The computer does not recognize the tablet.
2. Device connected: The computer has recognized the tablet.



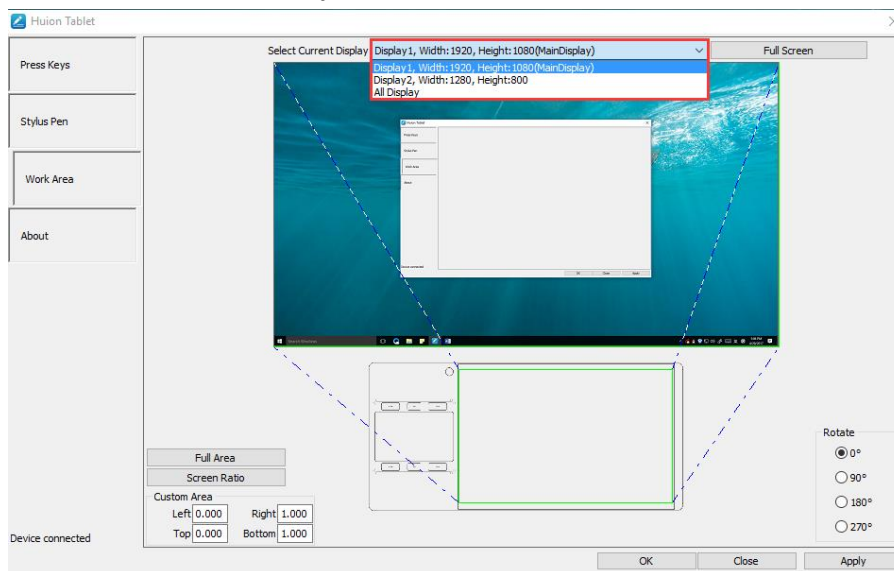
3.2 Working Area Setting

3.2.1 Using Multiple Monitors

Select the Working Area tab to define the relationship between pen movement on the tablet and cursor movement on the monitor screen.

By default the entire active area of tablet maps to the entire monitor. If more than one monitor is in use and you are in extended mode, you need to choose the related monitor on the driver interface which you are going to map to.

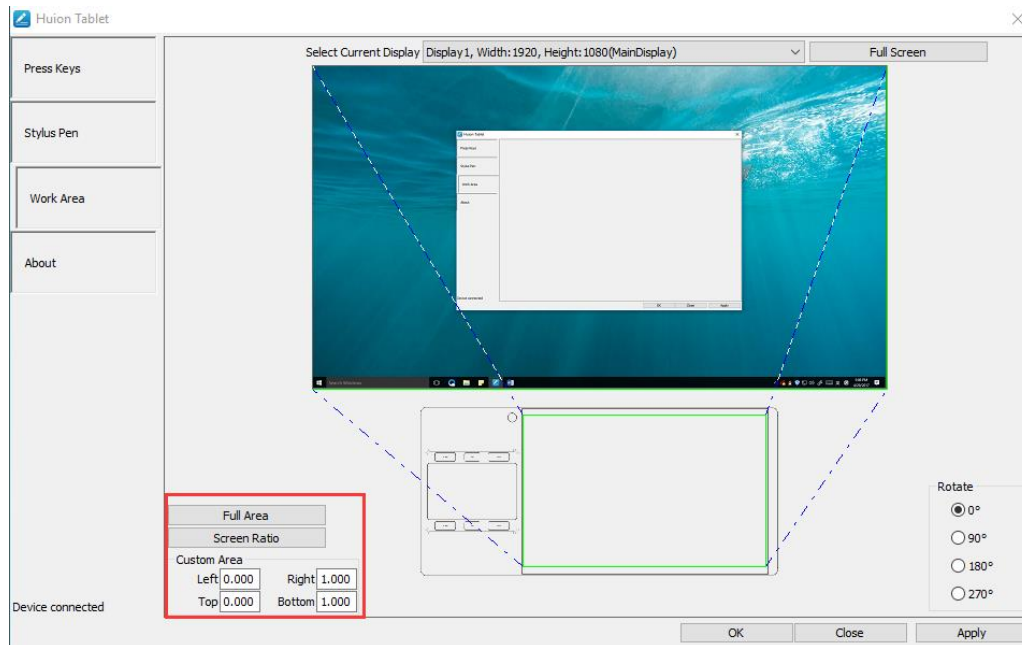
If your monitors are in mirror mode (All monitors display the same content), the tablet maps to the entire space on each monitor and the screen cursor is displayed on each monitor simultaneously.



3.2.2 Working Area Setting

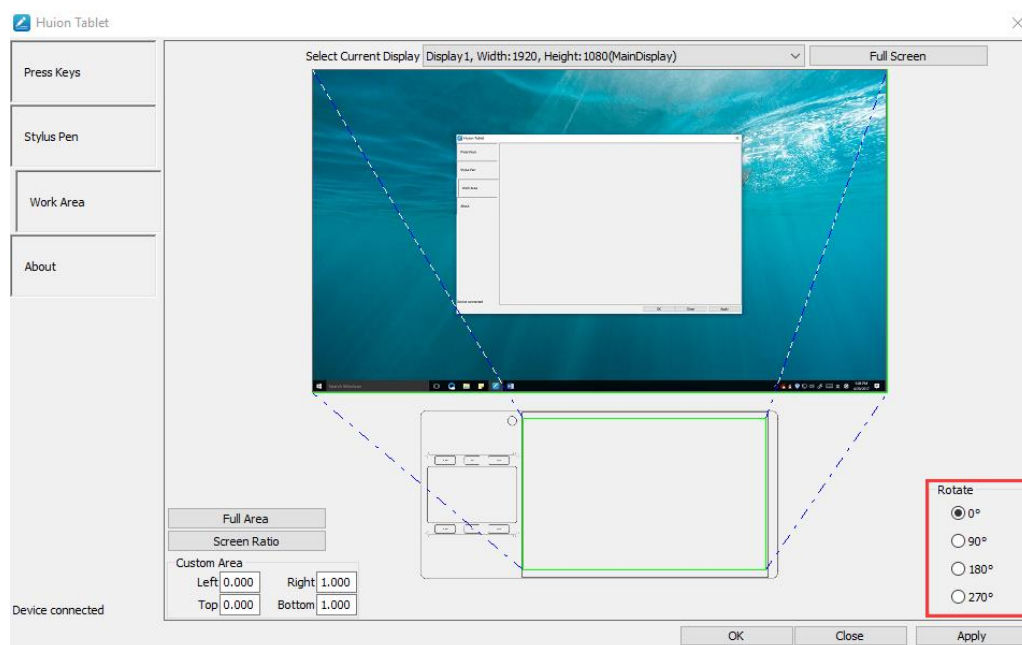
Define the tablet area that will be mapped to the screen area.

1. Full Area: the entire active area of the tablet. This is the default setting.
2. Customized Area: 1.> Enter coordinate values. or2>. Drag the corners of the foreground graphic to select the screen area.



3.2.3 Rotate Working Area

By changing the direction of the tablet to adapt to the left and right hand operation. You can rotate the tablet by 0°, 90°, 180° or 270°.



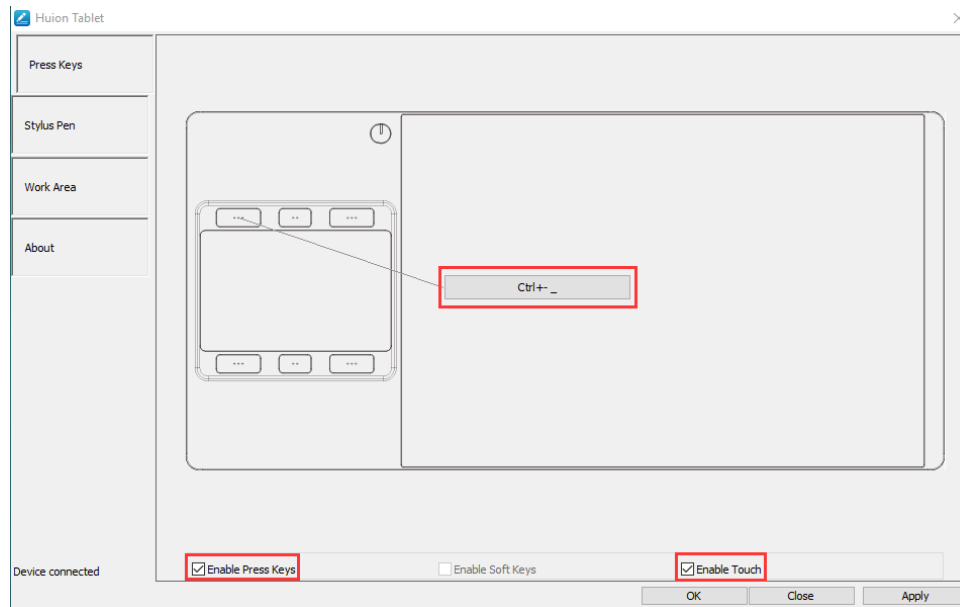
3.3 Press Keys Function Setting

Default Setting : Place the cursor on the press key or click the press key to find the default values.

Customized Setting : Select the function to be achieved on the pop-up dialog box, then click APPLY or OK to take effect.

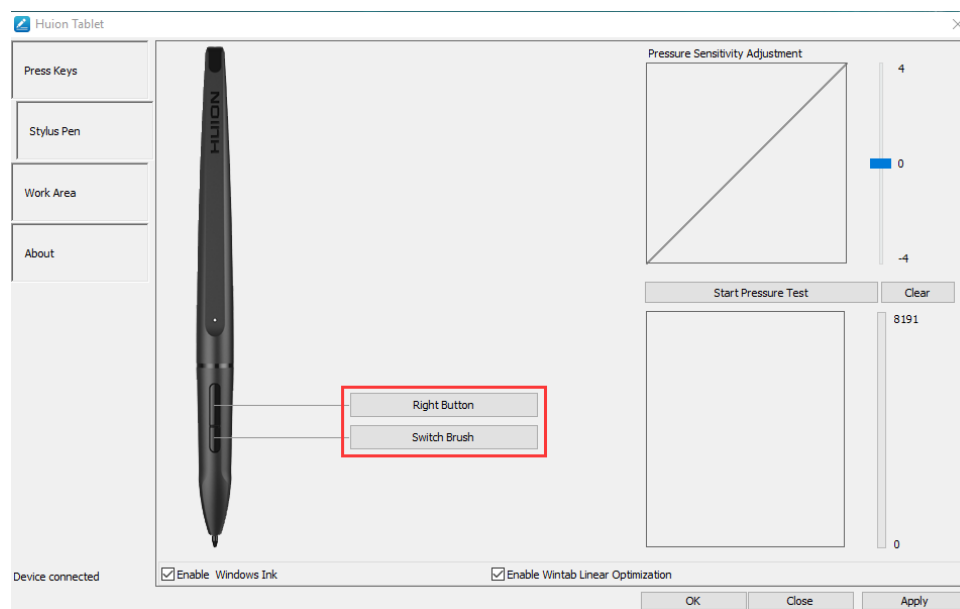
Enable/Disable Press Keys: Check/Uncheck "Enable Press Keys"

Enable/Disable Touch Pad: Check/Uncheck "Enable Touch"



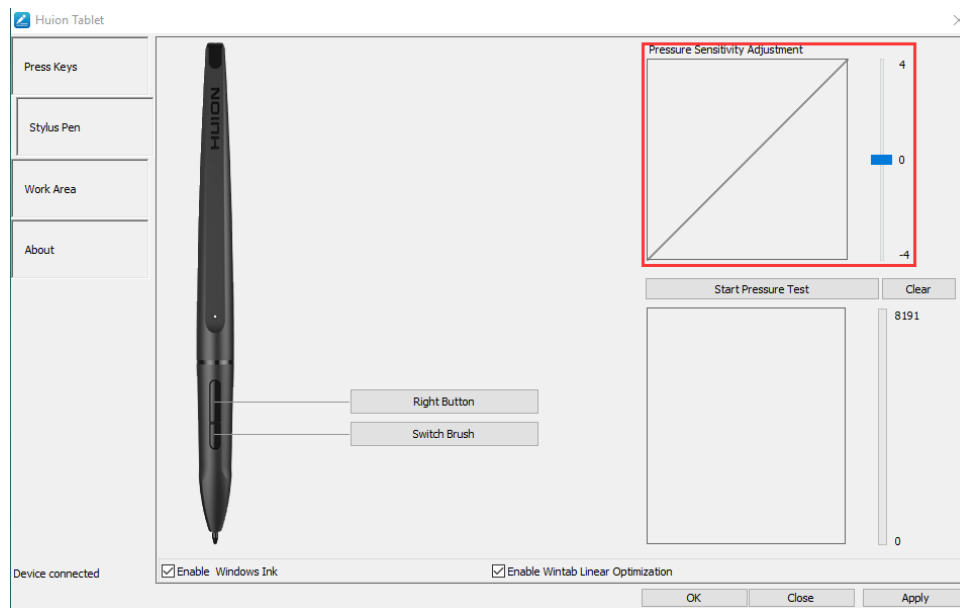
3.4 Pen Buttons Function Setting

Select the function to be achieved on the pop-up dialog box, then click APPLY or OK to take effect.



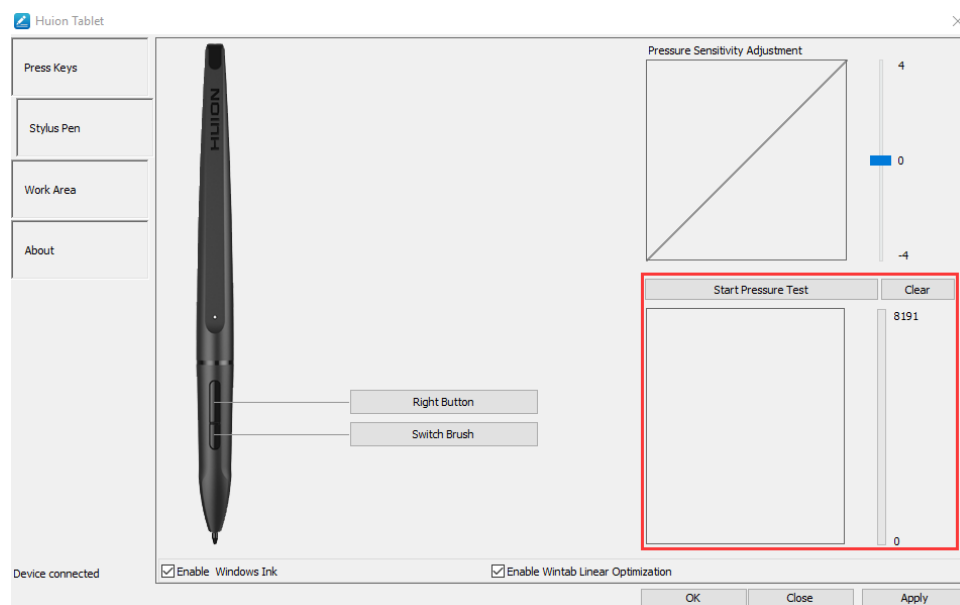
3.5 Pressure Sensitivity Setting

The pressure sensitivity will be changed by dragging the slider up and down, the smaller the value, the more pressure sensitive.



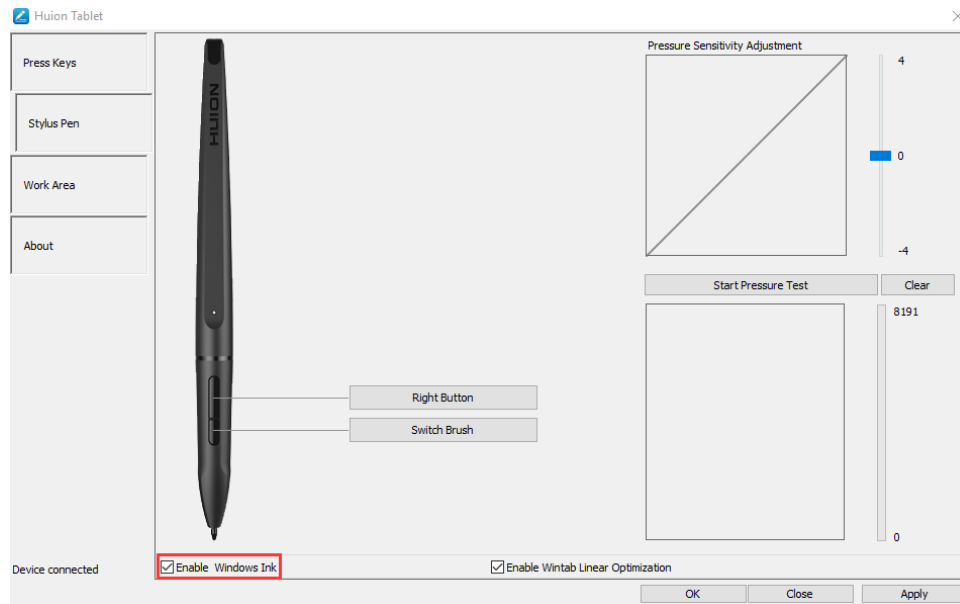
3.6 Pen Pressure Testing

Click "Start Pressure Test", you can gradually apply pressure to the stylus on the screen to test the pressure level. Click "Clear" button to clear all the ink.



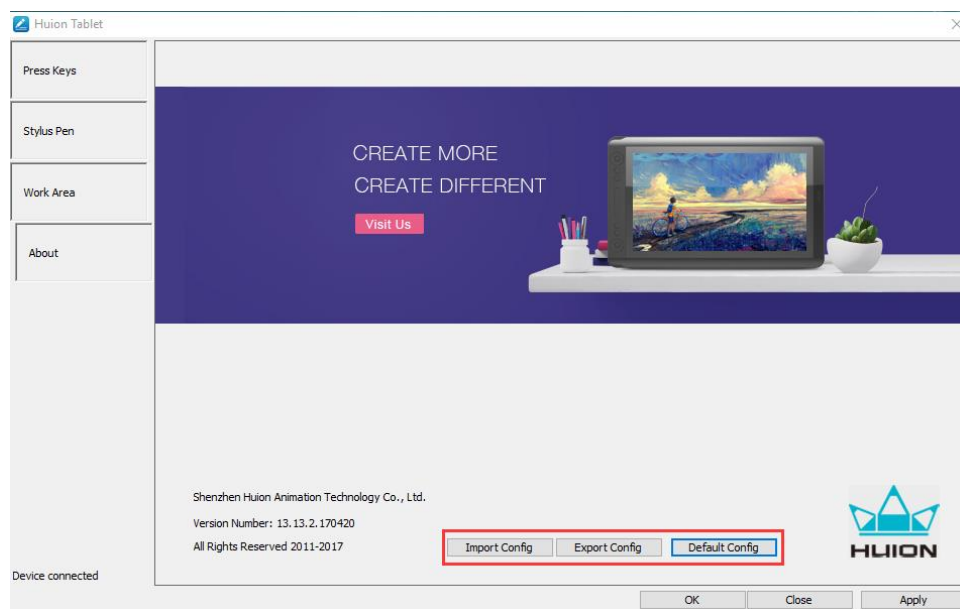
3.7 Enable the Windows Ink feature

Microsoft Windows provides extensive support for pen input. Pen features are supported in such as Microsoft Office、Windows Journal、Adobe Photoshop CC、SketchBook 6 and so on.



3.8 Data Export and Import

The driver supports exporting and importing your custom configuration data of the product, which is convenient for you to use different software and avoid the trouble of repeated settings.



4. Specifications

Graphics Tablet	
Model	G10T
Touch Technology	EMR + Capacitive Touch
Working Area	Pen : 254 x 158.8mm(10 x 6.25inch) Finger : 93.6 x 59.2mm
Dimension	374 x 177 x 9mm
Net Weight	0.65kg
Touch Resolution	5080LPI
Report Rate	233PPS
Pen Sensing Height	12mm
Interface	USB Type-C
Press Keys	6 Customized Press Keys
Wireless	2.4G
Wireless Distance	Approx. 6-15m (Depending on the actual use of the environment)
Battery Capacity	2500mAh
Charge Time	Approx. 7hrs
Life Time	Approx. 40hrs
OS Support	Windows 7or later, macOS 10.11 or later
Stylus Pen	
Model	PE150
Dimension	177.5 x Φ13.5mm
Weight	16.5g
Pressure	8192Levels
Life Time	Approx. 350hrs
Automatic Sleep Time	15min
Pen Tilt	±45°
Accuracy	±0.3mm

5. Trouble Shooting

5.1 Possible Breakdowns Related to TABLET

Abnormal Phenomena	Possible Solutions
There is no pressure in the graphics software but the cursor moves	You may have installed other tablet drivers or opened the drawing software when installing the driver. Please uninstall all drivers and close the drawing software, then reinstall the Huion driver. It's better to restart your computer after finishing the installation.
While using the tablet, the battery indicator flashes red	The battery voltage is low, please recharge the tablet in time.
The pen does not work	<ol style="list-style-type: none"> 1. Make sure power is on. 2. Make sure you are using the pen that originally came with your tablet. 3. Make sure the pen is with enough power, if not, please charge the pen 4. Make sure you installed the driver correctly.
The touch pad does not work	<ol style="list-style-type: none"> 1. Make sure the touch function was enabled in the driver. 2. Make sure you are using the right gesture. 3. The gestures only work on part of software.
Press Keys does not work	<ol style="list-style-type: none"> 1. Make sure the Press Keys function were enabled in the driver. 2. Make sure you have correctly defined the Press Keys.
The cursor is not stable or the drawing line is not straight when using wireless mode	<ol style="list-style-type: none"> 1. Make sure there is no other 2.4G device surround, because it may affect the tablet function. 2. Make sure there is no barrier between the tablet and receiver.
The computer can't enter sleep mode	When you are not using the tablet, please do not put the pen on the tablet surface, which will keep the computer awake.
The side button of the pen doesn't work	When pressing the side button, please make sure that the nib didn't touch the tablet surface and the distance between the nib and surface is within 10mm.

5.2 Possible Breakdowns Related to SYSTEM

Abnormal Phenomena	Possible Solutions
The computer can't recognize the tablet or the wireless receiver	Make sure the USB port is functional, if not, please change to another USB port.
The tablet charging progress seems to stop whenever the computer enters sleep mode	It might because the system stops powering the USB port. Then you can adjust your system power or energy saver settings so that the computer can't enter sleep mode while the tablet is charging.

6. CE and FCC Notice

This device was tested for typical body-worn operations. To comply with RF exposure requirements, a minimum separation distance of 0mm must be maintained between the user's body and the handset, including the antenna. Third-party belt-clips, holsters, and similar accessories used by this device should not contain any metallic components. Body-worn accessories that do not meet these requirements may not comply with RF exposure requirements and should be avoided. Use only the supplied or an approved antenna.

This device is in compliance with the essential requirements and other relevant provisions of Directive 2014/53/EU. All essential radio test suites have been carried out.

1. CAUTION: RISK OF EXPLOSION IF BATTERY IS REPLACED BY AN INCORRECT TYPE. DISPOSE OF USED BATTERIES ACCORDING TO THE INSTRUCTIONS:

2. The product shall only be connected to a USB interface of version USB 2.0

3. The device complies with RF specifications when the device is used at 0mm from your body

This device complies with part 15 of the FCC Rules. Operation is subject to the condition that this device does not cause harmful interference. Changes or modifications not expressly approved by the party responsible for compliance could void the user's authority to operate the equipment.

NOTE: This equipment has been tested and found to comply with the limits for a Class B digital device, pursuant to Part 15 of the FCC Rules. These limits are designed to provide reasonable protection against harmful interference in a residential installation. This equipment generates, uses and can radiate radiofrequency energy and, if not installed and used in accordance with the instructions, may cause harmful interference to radio communications. However, there is no guarantee that interference will not occur in a particular installation.

If this equipment does cause harmful interference to radio or television reception, which can be determined by turning the equipment off and on, the user is encouraged to try to correct the interference by one or more of the following measures:

- Reorient or relocate the receiving antenna.
- Increase the separation between the equipment and receiver.
- Connect the equipment into an outlet on a circuit different from that to which the receiver is connected.
- Consult the dealer or an experienced radio/TV technician for help.

Specific Absorption Rate (SAR) information:

This device meets the government's requirements for exposure to radio waves. The guidelines are based on standards that were developed by independent scientific organizations through periodic and thorough evaluation of scientific studies. The standards include a substantial safety margin designed to assure the safety of all

persons regardless of age or health.

FCC RF Exposure Information and Statement The SAR limit of USA (FCC) is 1.6 W/kg averaged over one gram of tissue. Device types: G10T (FCC ID: 2AFEJ-H16WT) has also been tested against this SAR limit. The highest SAR value reported under this standard during product certification for use at the ear is 1.188W/kg and when properly worn on the body is 1.342W/kg. This device was tested for typical body-worn operations with the back of the handset kept 0mm from the body. To maintain compliance with FCC RF exposure requirements, use accessories that maintain a 0mm separation distance between the user's body and the back of the handset. The use of belt clips, holsters and similar accessories should not contain metallic components in its assembly. The use of accessories that do not satisfy these requirements may not comply with FCC RF exposure requirements, and should be avoided.

Body-worn Operation

This device was tested for typical body-worn operations. To comply with RF exposure requirements, a minimum separation distance of 0cm must be maintained between the user's body and the handset, including the antenna. Third-party belt-clips, holsters, and similar accessories used by this device should not contain any metallic components. Body-worn accessories that do not meet these requirements may not comply with RF exposure requirements and should be avoided. Use only the supplied or an approved antenna.

7. After-service Contact

SHENZHEN HUION ANIMATION TECHNOLOGY CO.,LTD.

Building 28, Quarter 4, HuaiDeCuiGang Industrial Park, Fuyong Street, Bao'an District, Shenzhen, 518106, China

Note: Information in this manual is subject to change without further notice.

For more information, please contact us with our email: service@huion.com

Or go to our website (www.huion.com) to get the latest driver and user manual.